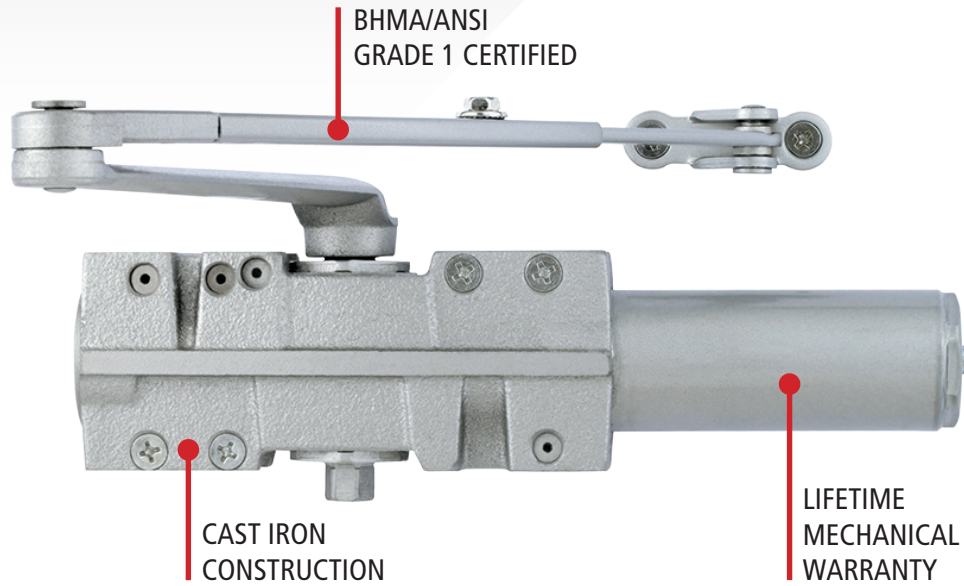


QDC100 DOOR CLOSER



QDC100 ARM TYPES

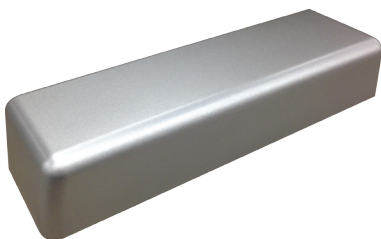


QDC111
Tri-Pack Arm

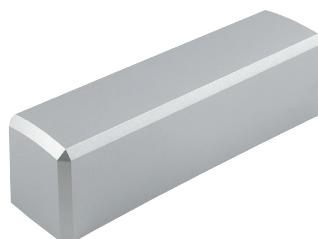


QDC115
Extra Duty Arm

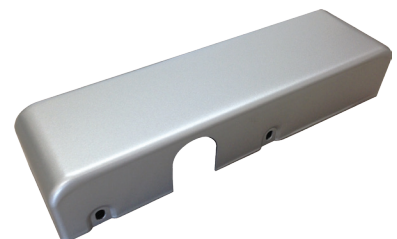
QDC100 COVERS



Rounded Plastic (R)



Beveled Plastic (P)



Metal (M)

Q: What is the STANLEY Commercial Hardware QDC100?

A: The QDC100 is a heavy-duty grade 1 door closer that features a cast iron body. It has been tested to significantly exceed the performance requirements for grade 1 certification.

Q: Who is the QDC100 customer?

A: The QDC100 is a cost-effective option ideal for heavy duty applications such as institutional and industrial environments. In addition, it has the same bolt pattern as the LCN 4040 so it is commonly used as a replacement closer in applications where the LCN 4040 has been specified.

Q: What arm options are offered on the QDC100?

A: The QDC100 is available in 10 unique arm options that feature variant arm and stop types. There are two arm types: a tri-pack arm and extra duty arm. The tri-pack arm can be mounted in three different ways: top jamb, standard arm, and standard parallel arm. This provides the distributor and end user with versatility on how the closer can be used. There are three different stop types: standard, compression and spring. The standard stop provides for an immediate stop and consequently can place strain on the hinges and door frame. The compression stop includes an engineered polymer that eliminates metal to metal contact that allows the energy to dissipate. The spring stop allows the energy to dissipate over an increased period of time. This significantly reduces wear and tear on the door frame and hardware providing a great solution for high usage doors. In addition, the QDC100 can be ordered with hold-open capabilities.

Q: What is the spring power capability on the QDC100?

A: The QDC100 is fully adjustable from 1-6 allowing for maximum flexibility.

Q: What covers are available to order for the QDC100?

A: The QDC100 is available to order with three different covers: rounded plastic (R), beveled plastic (P), and metal (M). The rounded plastic cover resembles that of the LCN 4040 cover.

Q: What options are available to order on the QDC100?

A: The QDC100 is available to order with a drop plate and barrier free option. The drop plate allows you to mount the closer in different configurations when dealing with reduced rail heights. The barrier free option enables the device to meet ADA requirements by requiring less than 5 pounds of force to enter.

Q: Do you have to specify handing when ordering a QDC100?

A: If you are ordering a QDC116 or a closer with a metal cover, you must specify handing. Otherwise, the devices and covers are non-handed, so you can simply flip it around to fit the specific application.

Q: What finishes are offered for the QDC100?

A: The QDC100 is available in 3 finishes: 689, 690 and 696.

Q: What is the lead time for a QDC100?

A: The average lead time for a QDC100 is less than 2 weeks.

Q: What warranty does the QDC100 have?

A: The QDC100 has a limited lifetime mechanical warranty and a 3 year finish warranty.

Q: What is the QDC100 list price?

A: The list price for the QDC100 ranges from \$313 – \$450.