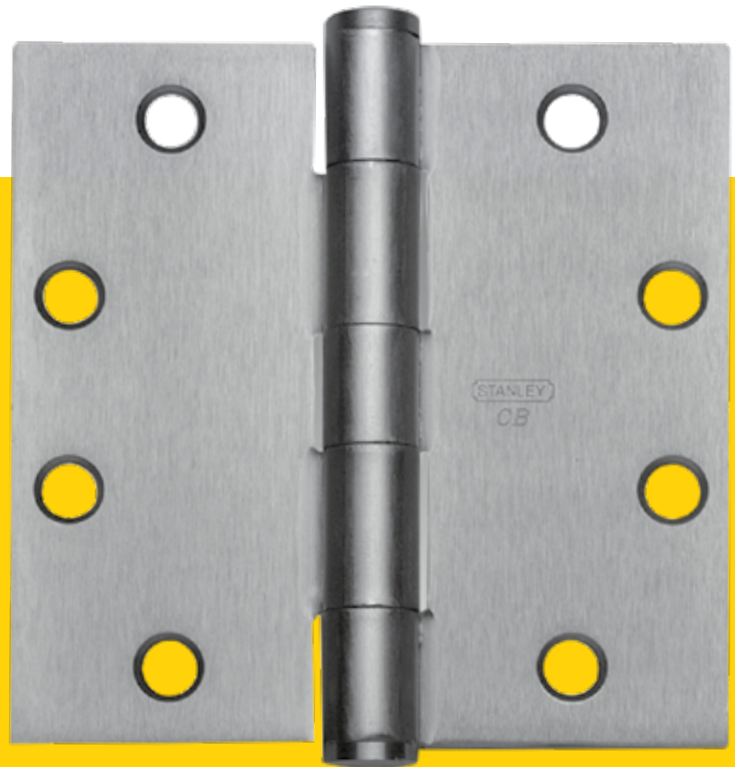


STANLEY®



5 KNUCKLE: CONCEALED BEARING HINGES

5 Knuckle

Concealed Bearing Hinges

dormakaba 

Trusted experts. Proven reliability. Simply STANLEY.

TABLE OF CONTENTS

5 knuckle concealed bearing design2
Full mortise hinges 3-4
Half surface hinges..... 5-6
Half mortise hinges..... 7-8
Full surface hinges..... 9-10

Slip-in hinges.....11
Pivot reinforced hinges.....12
Swing clear hinges 13-14
Plain bearing hinges15
Conversion tips16

Patented Two Piece Bearing System



CB5K

- Our patented bearing system eliminates metal to metal contact between knuckles by creating its own bearing surface between the washer and sleeve. As the stainless steel washer extends into the sleeve it eliminates metal to metal contact between the pin and barrel, resulting in a smooth, quiet operation superior to that of a ball bearing assembly.
- Innovative design.
- Vertical and Lateral wear performance exceeds ANSI/BHMA Grade 1 standard.
- Limited lifetime warranty for the life of the building.
- Approved for use on all types of fire doors up to 4' x 10' (1219mm x 3048mm); 8' x 10' (2438mm x 3048mm) pairs, to maintain the integrity of fire rated openings and walls. Refer to NFPA80.
- Bearing is maintenance free – no oil, no grease
- CB barrel matches the appearance of "F" line plain bearing hinges for uniform appearance throughout the building.
- Equipped with easily seated non-rising pins.

5 Knuckle Full Mortise Hinges Standard Weight Concealed Bearing

CB179 – (ANSI A8112) Steel – polished and plated or phosphated and prime coated for painting

CB191 – (ANSI A2112) Brass or bronze – polished and plated or painted

CB191 (32) – (ANSI A5112) Stainless steel – highly polished

CB191 (32D) – (ANSI A5112) Stainless steel – satin finish



- For medium weight doors of average frequency
- All hinges have template screw hole location for use on either wood or hollow metal doors and frames
- Concealed bearing is maintenance free – no oil, no grease
- Pins in non-ferrous hinges are stainless steel
- Hole in bottom tip for easy pin removal
- Reversible flush tips and pins
- Limited lifetime warranty
- Hinges can be furnished as follows:
 - with raised barrel (RB)
 - with electric wires and/or switches (CE and/or CS)
 - with hospital tips (HT)
 - with decorative tips
 - with security studs
 - with non-removable pins (NRP)



Size Open		Gauge of Metal		Flat Head Screws Per Piece		Quantity Per Box	Quantity Per Case	Case Weight			
Inches	(mm)	Inches	(mm)	Machine	Wood			Bronze		Steel	
							Lbs.	(Kg)	Lbs.	(Kg)	
3 1/2 x 3	(89 x 76)	.123	(3.1)	6 - 10-24 x 1/2	6 - 10 x 1	3 ea.	90 ea.	58	(26)	54	(24)
3 1/2 x 3 1/2	(89 x 89)	.123	(3.1)	6 - 10-24 x 1/2	6 - 10 x 1	3 ea.	90 ea.	65	(29)	59	(27)
4 x 3 1/2	(102 x 89)	.130	(3.3)	8 - 12-24 x 1/2	8 - 12 x 1 1/4	3 ea.	48 ea.	43	(19)	39	(18)
4 x 4	(102 x 102)	.130	(3.3)	8 - 12-24 x 1/2	8 - 12 x 1 1/4	3 ea.	48 ea.	45	(20)	42	(19)
4 1/2 x 4	(114 x 102)	.134	(3.4)	8 - 12-24 x 1/2	8 - 12 x 1 1/4	3 ea.	48 ea.	55	(25)	52	(24)
4 1/2 x 4 1/2	(114 x 114)	.134	(3.4)	8 - 12-24 x 1/2	8 - 12 x 1 1/4	3 ea.	48 ea.	59	(27)	55	(25)
5 x 4	(127 x 102)	.146	(3.7)	8 - 12-24 x 1/2	4 - 12 x 1 1/4	3 ea.	30 ea.	41	(19)	39	(18)
5 x 4 1/2	(127 x 114)	.146	(3.7)	8 - 12-24 x 1/2	4 - 12 x 1 1/4	3 ea.	30 ea.	45	(20)	43	(19)
5 x 5	(127 x 127)	.146	(3.7)	8 - 12-24 x 1/2	4 - 12 x 1 1/4	3 ea.	30 ea.	50	(23)	46	(21)
*6 x 4 1/2	(152 x 114)	.160	(4.1)	10 - 1/4 - 20 x 1/2	5 - 14 x 1 1/2	3 ea.	24 ea.	43	(19)	36	(16)
*6 x 5	(152 x 127)	.160	(4.1)	10 - 1/4 - 20 x 1/2	5 - 14 x 1 1/2	3 ea.	24 ea.	47	(21)	40	(18)
*6 x 6	(152 x 152)	.160	(4.1)	10 - 1/4 - 20 x 1/2	5 - 14 x 1 1/2	3 ea.	24 ea.	67	(30)	61	(28)

* Available in Steel only

Consult factory for other sizes not listed

5 Knuckle Full Mortise Hinges

Heavy Weight Concealed Bearing

CB168 – (ANSI A8111) Steel – polished and plated or phosphated and prime coated for painting

CB199 – (ANSI A2111) Brass or bronze – polished and plated or painted

CB199 (32) – (ANSI A5111) Stainless steel – highly polished

CB199 (32D) – (ANSI A5111) Stainless steel – satin finish



- For use on heavy weight doors or doors where high frequency is expected such as entrance doors to office buildings, stores, public buildings and corridor entrance doors to offices.
- All hinges have template screw hole location for use on either wood or hollow metal doors and frames
- Concealed bearing is maintenance free – no oil, no grease
- Pins in non-ferrous hinges are stainless steel
- Hole in bottom tip for easy pin removal
- Reversible flush tips and pins
- Limited lifetime warranty
- Hinges can be furnished as follows:
 - with raised barrel (RB)
 - with electric wires and/or switches (CE and/or CS)
 - with hospital tips (HT)
 - with decorative tips
 - with security studs
 - with non-removable pins (NRP)



Size Open		Gauge of Metal		Flat Head Screws Per Piece		Quantity Per Box	Quantity Per Case	Case Weight			
Inches	(mm)	Inches	(mm)	Machine	Wood			Bronze		Steel	
								Lbs.	(Kg)	Lbs.	(Kg)
4 1/2 x 4 1/2	(114 x 114)	.180	(4.6)	8 - 12-24 x 1/2	8 - 12 x 1 1/4	3 ea.	30 ea.	49	(22)	42	(19)
5 x 4 1/2	(127 x 114)	.190	(4.8)	8 - 12-24 x 1/2	8 - 12 x 1 1/2	3 ea.	24 ea.	46	(21)	40	(18)
5 x 5	(127 x 127)	.190	(4.8)	8 - 12-24 x 1/2	8 - 12 x 1 1/2	3 ea.	24 ea.	49	(22)	46	(21)
6 x 4 1/2	(152 x 114)	.203	(5.2)	10 - 1/4 -20 x 1/2	10 - 14 x 1 1/2	3 ea.	24 ea.	60	(27)	53	(24)
6 x 5	(152 x 127)	.203	(5.2)	10 - 1/4 -20 x 1/2	10 - 14 x 1 1/2	3 ea.	24 ea.	62	(28)	55	(25)
6 x 6	(152 x 152)	.203	(5.2)	10 - 1/4 -20 x 1/2	10 - 14 x 1 1/2	3 ea.	24 ea.	72	(28)	61	(28)
8 x 6*	(203 x 152)	.203	(5.2)	16 - 1/4 -20 x 1/2	16 - 14 x 1 1/2	3 ea.	12 ea.			51	(23)
8 x 8*	(203 x 203)	.203	(5.2)	16 - 1/4 -20 x 1/2	16 - 14 x 1 1/2	3 ea.	12 ea.			61	(28)

* Available in Steel only

Consult factory for other sizes not listed

5 Knuckle Half Surface Hinges

Standard Weight Concealed Bearing

CB173 (ANSI A8412) Steel – polished and plated or phosphated and prime coated for painting

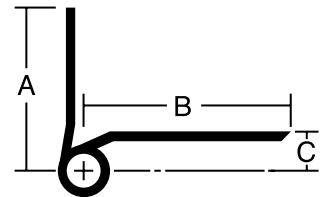
CB112 (ANSI A2412) Brass or bronze – polished and painted or plated

CB112 (32) (ANSI A5412) Stainless steel – highly polished

CB112 (32D) (ANSI A5412) Stainless steel – satin finish



- For medium weight wood, kalamein, or mineral core doors with edge rails that won't hold screws, hung on hollow metal frames, of average frequency
- Concealed bearing is maintenance free – no oil, no grease
- Pins in non-ferrous hinges are stainless steel
- Reversible flush tips and pins
- Hinges can be furnished with hospital tips (HT)
- Consider using a back plate with these hinges
- Limited lifetime warranty
- Packed with machine screws and grommet nuts for 1 3/4" doors



Measurements below

Size Length of Joint	Width		Offset (C)	Gauge of Metal	Flat Head Screws Per Piece		Quantity Per Box	Quantity Per Case	Case Weight	
	Frame Leaf (A)	Door Leaf (B)			Frame Leaf	Door Leaf			Bronze	Steel
	Inches (mm)	Inches (mm)			Inches (mm)	Inches (mm)			Lbs. (Kg)	Lbs. (Kg)
4 (102)	1 13/16 (46)	2 1/4 (57.2)	1/2 (12.7)	.130 (3.3)	4-12-24 x 1/2	3-1/4-20 x 2	3 ea.	48 ea.	56 (26)	47 (22)
4 1/2 (114)	2 1/16 (52.4)	2 9/16 (65.1)	9/16 (14.3)	.134 (3.4)	4-12-24 x 1/2	3-1/4-20 x 2	3 ea.	30 ea.	44 (20)	37 (17)
5 (127)	2 1/16 (52.4)	2 7/8 (73)	9/16 (14.3)	.146 (3.7)	4-12-24 x 1/2	4 -1/4-20 x 2	3 ea.	24 ea.	48 (22)	39 (18)

5 Knuckle Half Surface Hinges

Heavy Weight Concealed Bearing

CB163 (ANSI A8411) Steel – polished and plated or phosphated and prime coated for painting

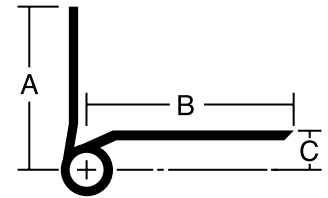
CB113 (ANSI A2411) Brass or bronze – polished and plated or painted

CB113 (32) (ANSI A5411) Stainless steel – highly polished

CB113 (32D) (ANSI A5411) Stainless steel – satin finish



- For heavy or high frequency wood, or mineral core doors with edge rails that won't hold screws hung on hollow metal frames
- Heavy weight gauge increases available bearing surface
- Concealed bearing is maintenance free – no oil, no grease
- Pins in non-ferrous hinges are stainless steel
- Reversible flush tips and pins
- Hinges can be furnished with hospital tips (HT)
- Consider using a back plate with these hinges
- Limited lifetime warranty
- Packed with machine screws and grommet nuts for 1 3/4" doors



Measurements below

Size Length of Joint	Width		Offset (C)	Gauge of Metal	Flat Head Screws Per Piece		Quantity Per Box	Quantity Per Case	Case Weight	
	Frame Leaf (A)	Door Leaf (B)			Frame Leaf	Door Leaf			Bronze	Steel
Inches (mm)	Inches (mm)	Inches (mm)	Inches (mm)	Inches (mm)					Lbs. (Kg)	Lbs. (Kg)
4 1/2 (114)	2 1/8 (54)	2 9/16 (65)	5/8 (15.9)	.180 (4.6)	4-12-24 x 1/2	3-1/4-20 x 2	3 ea.	30 ea.	59 (27)	47 (21)
5 (127)	2 1/8 (54)	2 7/8 (73)	5/8 (15.9)	.190 (4.8)	4-12-24 x 1/2	4-1/4-20 x 2	3 ea.	24 ea.	58 (26)	48 (22)
6 (152)	2 1/8 (54)	3 1/4 (82.6)	5/8 (15.9)	.203 (5.2)	5-1/4-20 x 1/2	5-1/4-20 x 2	3 ea.	24 ea.	90 (41)	82 (37)

5 Knuckle Half Mortise Hinges

Standard Weight Concealed Bearing

CB167 (ANSI A8212) Steel – polished and plated or phosphated and prime coated for painting

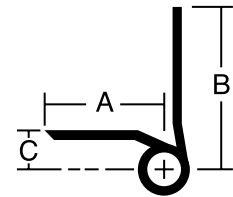
CB108 (ANSI A2212) Brass or Bronze – polished and plated or painted

CB108 (32) (ANSI A5212) Stainless steel – highly polished

CB108 (32D) (ANSI A5212) Stainless steel – satin finish



- For medium weight hollow metal or wood doors of average frequency, hung on channel iron frames
- Concealed bearing is maintenance free – no oil, no grease
- Pins in non-ferrous hinges are stainless steel
- Reversible flush tips and pins
- Hinges can be furnished with hospital tips (HT)
- Limited lifetime warranty



Measurements below

Size Length of Joint	Width		Offset (C)	Gauge of Metal	Flat Head Screws Per Piece		Quantity Per Box	Quantity Per Case	Case Weight	
	Frame Leaf (A)	Door Leaf (B)			Frame Leaf	Door Leaf			Bronze	Steel
Inches (mm)	Inches (mm)	Inches (mm)	Inches (mm)	Inches (mm)					Lbs. (Kg)	Lbs. (Kg)
4 1/2 (114)	1 1/2 (38.1)	2 1/16 (52.4)	7/16 (11.1)	.134 (3.4)	3-12-24 x 1/2	3-12-24 x 1/2	3 ea.	30 ea.	30 (14)	29 (13)
5 (127)	1 1/2 (38.1)	2 1/16 (52.4)	7/16 (11.1)	.146 (3.7)	4-12-24 x 1/2	4-12-24 x 1/2	3 ea.	24 ea.	37 (17)	33 (15)

5 Knuckle Half Mortise Hinges

Heavy Weight Concealed Bearing

CB138 (ANSI A8211) Steel – polished and plated or phosphated and prime coated for painting

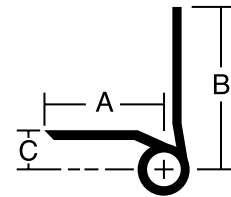
CB98 (ANSI A2211) Brass or bronze – polished and plated or painted

CB98 (32) (ANSI A5211) Stainless steel – highly polished

CB98 (32D) (ANSI A5211) Stainless steel – satin finish



- For heavy or high frequency hollow metal or wood doors hung on channel iron frames
- Concealed bearing is maintenance free – no oil, no grease
- Pins in non-ferrous hinges are stainless steel
- Reversible flush tips and pins
- Hinges can be furnished with hospital tips (HT)
- Limited lifetime warranty



Measurements below

Size Length of Joint	Width		Offset (C)	Gauge of Metal	Flat Head Screws Per Piece		Quantity Per Box	Quantity Per Case	Case Weight	
	Frame Leaf (A)	Door Leaf (B)			Frame Leaf	Door Leaf			Bronze	Steel
Inches (mm)	Inches (mm)	Inches (mm)	Inches (mm)	Inches (mm)					Lbs. (Kg)	Lbs. (Kg)
4 1/2 (114)	1 1/2 (38.1)	2 1/8 (54)	1/2 (12.7)	.180 (4.6)	3-12-24 x 1/2	4-12-24 x 1/2	3 ea.	30 ea.	36 (17)	36 (17)
5 (127)	1 1/2 (38.1)	2 1/8 (54)	1/2 (12.7)	.190 (4.8)	4-12-24 x 1/2	4-12-24 x 1/2	3 ea.	24 ea.	36 (17)	36 (17)
6 (152)	1 1/2 (38.1)	2 1/8 (54)	1/2 (12.7)	.203 (5.2)	4-1/4-20 x 1/2	5-1/4-20 x 1/2	3 ea.	24 ea.	48 (22)	48 (22)

5 Knuckle Full Surface Hinges

Standard Weight Concealed Bearing

CB171 (ANSI A8312) Steel – polished and plated or phosphated and prime coated for painting

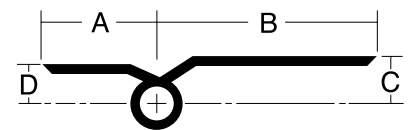
CB110 (ANSI A2312) Brass or bronze – polished and plated or painted

CB110 (32) (ANSI A5312) Stainless steel – highly polished

CB110 (32D) (ANSI A5312) Stainless steel – satin finish



- For medium weight kalamein, mineral core, or wood doors with edge rails that won't hold screws of average frequency hung on channel iron frames
- Concealed bearing is maintenance free – no oil, no grease
- Pins in non-ferrous hinges are stainless steel
- Reversible flush tips and pins
- Hinges can be furnished with hospital tips (HT)
- Consider using a back plate with these hinges
- Limited lifetime warranty
- Packed with machine screws and grommet nuts for 1 3/4" doors



Measurements below

Size Length of Joint	Width		Offset		Gauge of Metal	Flat Head Screws Per Piece		Quantity Per Box	Quantity Per Case	Case Weight	
	Frame Leaf (A)	Door Leaf (B)	Door Leaf (C)	Frame Leaf (D)		Frame Leaf	Door Leaf			Bronze	Steel
Inches (mm)	Inches (mm)	Inches (mm)	Inches (mm)	Inches (mm)	Inches (mm)					Lbs. (Kg)	Lbs. (Kg)
4 1/2 (114)	1 1/2 (38.1)	2 9/16 (65)	9/16 (14.3)	7/16 (11.1)	.134 (3.4)	3-12-24 x 1/2	3-1/4-20 x 2	3 ea.	30 ea.	40 (18)	38 (17)
5 (127)	1 1/2 (38.1)	2 7/18 (73)	9/16 (14.3)	7/16 (11.1)	.146 (3.7)	4-12-24 x 1/2	4-1/4-20 x 2	3 ea.	24 ea.	43 (20)	39 (18)

5 Knuckle Full Surface Hinges

Heavy Weight Concealed Bearing

CB169 (ANSI A8311) Steel – polished and plated or phosphated and prime coated for painting

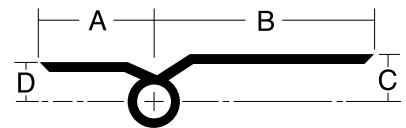
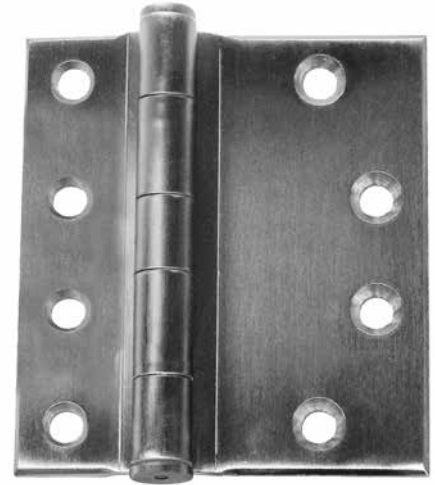
CB109 (ANSI A2311) Brass or bronze – polished and plated or painted

CB109 (32) (ANSI A5311) Stainless steel – highly polished

CB109 (32D) (ANSI A5311) Stainless steel – satin finish



- For heavy or high frequency mineral core or wood doors with edge rails that won't hold screws, hung on channel iron frames
- Heavy weight gauges increase available bearing surface area for maximum friction reduction
- Concealed bearing is maintenance free – no oil, no grease
- Pins in non-ferrous hinges are stainless steel
- Reversible flush tips and pins
- Hinges can be furnished with hospital tips (HT)
- Consider using a back plate with these hinges
- Limited lifetime warranty
- Available with an inline hole pattern for tubular doors
- Packed with machine screws and grommet nuts for 1 3/4" doors



Measurements below

Size Length of Joint	Width		Offset		Gauge of Metal	Flat Head Screws Per Piece		Quantity Per Box	Quantity Per Case	Case Weight	
	Frame Leaf (A)	Door Leaf (B)	Door Leaf (C)	Frame Leaf (D)		Frame Leaf	Door Leaf			Bronze	Steel
Inches (mm)	Inches (mm)	Inches (mm)	Inches (mm)	Inches (mm)	Inches (mm)					Lbs. (Kg)	Lbs. (Kg)
4 1/2 (114)	1 1/2 (38.1)	2 9/16 (65)	5/8 (15.9)	1/2 (12.7)	.180 (4.6)	3-12-24 x 1/2	3-1/4 -20 x 2	3 ea.	30 ea.	56 (26)	44 (20)
5 (127)	1 1/2 (38.1)	2 7/8 (73)	5/8 (15.9)	1/2 (12.7)	.190 (4.8)	4-12-24 x 1/2	4-1/4 -20 x 2	3 ea.	24 ea.	57 (26)	51 (23)
6 (152)	1 1/2 (38.1)	3 1/4 (82.6)	5/8 (15.9)	1/2 (12.7)	.203 (5.2)	4-1/4-20 x 1/2	5-1/4 -20 x 2	3 ea.	24 ea.	80 (36)	74 (34)

5 Knuckle Slip-In Hinges

Standard Weight Concealed Bearing – Application “A”

- CB179 – (ANSI A8152) Slip-in application “A”, steel – polished and plated or painted
- CB191 – (ANSI A2152) Slip-in application “A”, brass or bronze – polished and plated or painted
- CB191 (32) – (ANSI A5152) Slip-in application “A”, stainless steel – highly polished
- CB191 (32D) – (ANSI A5152) Slip-in application “A”, stainless steel – satin finish



- For aluminum doors with aluminum frames
- “Slip-in” application where one leaf of hinge is inserted through a slot in door or frame, and the other leaf mortised
- Application A – specify “swaged to provide 3/16” (4.8mm) clearance between leaves when parallel and one leaf with standard punching and countersinking and other leaf drilled and tapped.” Specify hand desired.
- Round corners – use prefix “RD” and specify radius desired. 1/4” (6.4mm) radius available on all sizes
- Other types and sizes available on request
- Pins in non-ferrous hinges are stainless steel

Size Open		Gauge of Metal		Flat Head Machine Screws/Per Piece*	Quantity Per Box	Quantity Per Case	Case Weight			
Inches	(mm)	Inches	(mm)				Steel		Bronze	
							Lbs.	(Kg)	Lbs.	(Kg)
4 x 4	(102 x 102)	.130	(3.3)	8 - 12-24 x 1/2	3 ea.	48 ea.	44	(20)	45	(21)
4 1/2 x 4	(114 x 102)	.134	(3.4)	8 - 12-24 x 1/2	3 ea.	48 ea.	52	(24)	55	(25)
4 1/2 x 4 1/2	(114 x 114)	.134	(3.4)	8 - 12-24 x 1/2	3 ea.	48 ea.	55	(25)	59	(27)

* For application A when used on wood doors, specify wood screws for door leaf

Standard Weight Concealed Bearing – Application “B”

- CB179 – (ANSI A8142) Slip-in application “B”, steel – polished and plated or painted
- CB191 – (ANSI A2142) Slip-in application “B”, brass or bronze – polished and plated or painted
- CB191 (32) – (ANSI A5142) Slip-in application “B”, stainless steel – highly polished
- CB191 (32D) – (ANSI A5142) Slip-in application “B”, stainless steel – satin finish



- For aluminum doors with aluminum frames
- “Slip-in” application where both leaves of hinge are inserted through slots in door and frame
- Application B – specify “both leaves swaged to provide 5/16” (7.9mm) clearance between leaves when parallel and both leaves drilled and tapped”
- Round corners – use prefix “RD” and specify radius desired. 1/4” (6.4mm) radius available on all sizes
- Other types and sizes available on request
- Pins in nonferrous hinges are stainless steel
- Not handed

Size Open		Gauge of Metal		Flat Head Machine Screws/Per Piece*	Quantity Per Box	Quantity Per Case	Case Weight			
Inches	(mm)	Inches	(mm)				Steel		Bronze	
							Lbs.	(Kg)	Lbs.	(Kg)
4 x 4	(102 x 102)	.130	(3.3)	8 - 12-24 x 1/2	3 ea.	48 ea.	44	(20)	45	(21)
4 1/2 x 4	(114 x 102)	.134	(3.4)	8 - 12-24 x 1/2	3 ea.	48 ea.	52	(24)	55	(25)
4 1/2 x 4 1/2	(114 x 114)	.134	(3.4)	8 - 12-24 x 1/2	3 ea.	48 ea.	55	(25)	59	(27)

5 Knuckle Pivot Reinforced Hinges

Heavy Weight Concealed Bearing

Shock Proof!

Steel – polished and plated or phosphated and prime coated for painting

CB211 – (ANSI A8541)

CB212 – (ANSI A8541)

CB213 – (ANSI A8541)

Bronze – polished and plated or painted

CB221 – (ANSI A2541)

CB222 – (ANSI A2541)

CB223 – (ANSI A2541)

Stainless steel – satin finish

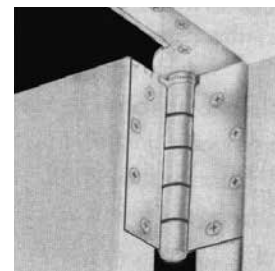
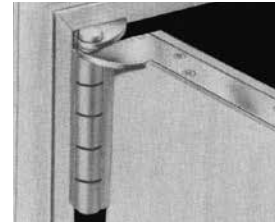
CB221 (32D) – (ANSI A5541)

CB222 (32D) – (ANSI A5541)

CB223 (32D) – (ANSI A5541)



- Ideal for any door that is subject to jarring or abusive handling
- The purpose of this two-in-one combination is to anchor and reinforce doors and frames exposed to damage from abuse. In such installations, stresses are transferred to the top hinge
- A pivot and butt hinge are combined in one compact interlocked unit and share the same pin to assure perfect alignment. Interlocked corners prevent sidewise motion of pivot or butt leaves
- Heavy weight gauges increase available bearing surface area for maximum friction reduction
- Beveled edge doors require a different door plate than square edge doors
- Short door plate [4" (102mm) min.] available for use with most concealed holders and closers – specify on order
- Handed left or right
- Limited lifetime warranty



Right Hand Shown

Class Number	Door Edge	Metal	Contents of Set			
			Top Hinge*		Intermediate and Bottom Hinge*	
					Number**	Size Inches (mm)
CB211	Square or beveled 1/8" in 2" (3.2 in 51mm)	Steel	1–Type of CB168 NRP x Frame plate ONLY		2-CB168-NRP	5 x 4 1/2 (127 x 114)
CB212	Square	Steel	1–Type of CB168 NRP x Frame and door plate		2-CB168-NRP	5 x 4 1/2 (127 x 114)
CB213	Beveled 1/8" IN 2" (3.2 in 51 mm)	Steel	1–Type of CB168 NRP x Frame and door plate		2-CB168-NRP	5 x 4 1/2 (127 x 114)
CB221	Square or beveled 1/8" in 2" (3.2 in 51mm)	Bronze or Stainless Steel	1–Type of CB199 NRP x Frame plate ONLY		2-CB199-NRP	5 x 4 1/2 (127 x 114)
CB222	Square	Bronze or Stainless Steel	1–Type of CB199 NRP x Frame and door plate		2-CB199-NRP	5 x 4 1/2 (127 x 114)
CB223	Beveled 1/8" in 2" (3.2 in 51mm)	Bronze or Stainless Steel	1–Type of CB199 NRP x Frame and door plate		2-CB199-NRP	5 x 4 1/2 (127 x 114)

Class Number	Gauge of Metal		Frame Plate		Door Plate		Flat Head Screws/Set		Sets Per Case	Case Weight					
			Length	Width	Length	Width	Wood	Machine		Lbs.	(Kg)				
	Inches (mm)	Inches (mm)	Inches (mm)	Inches (mm)	Inches (mm)	Inches (mm)									
CB211	.190	(4.8)	5	(127)	1.25	(31.8)			28-12- x 1 1/2	28-12-24 x 1/2	1	6	(3)		
CB212	.190	(4.8)	5	(127)	1.25	(31.8)	7.78	(198)	1.25	(31.8)	32-12- x 1 1/2	32-12-24 x 1/2	1	7	(3)
CB213	.190	(4.8)	5	(127)	1.25	(31.8)	7.64	(194)	1.25	(31.8)	32-12- x 1 1/2	32-12-24 x 1/2	1	7	(3)
CB221	.190	(4.8)	5	(127)	1.25	(31.8)			12-12- x 1 1/2	28-12-24 x 1/2	1	6	(3)		
CB222	.190	(4.8)	5	(127)	1.25	(31.8)	7.78	(198)	1.25	(31.8)	16-12- x 1 1/2	32-12-24 x 1/2	1	7	(3)
CB222 (32D)	.190	(4.8)	5	(127)	1.25	(31.8)	7.78	(198)	1.25	(31.8)	16-12- x 1 1/2	32-12-24 x 1/2	1	7	(3)
CB223	.190	(4.8)	5	(127)	1.25	(31.8)	7.64	(194)	1.25	(31.8)	16-12- x 1 1/2	32-12-24 x 1/2	1	7	(3)
CB223 (32D)	.190	(4.8)	5	(127)	1.25	(31.8)	7.64	(194)	1.25	(31.8)	16-12- x 1 1/2	32-12-24 x 1/2	1	7	(3)

* Hinges supplied with set screw in barrel, non-removable pin

** For doors over 7' 6" in height, specify additional hinges to order: specify catalog number, finish and hand

5 Knuckle Swing Clear Hinges

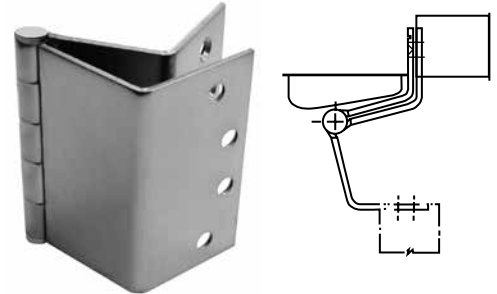
Standard Weight Plain Bearing "Swing Clear" Full Mortise

Steel – polished and plated or phosphated and prime coated for painting

F248 – (ANSI A8123)



- Equipped with easily seated non-rising pins
- Reversible flush tips and pins
- Ideal for remodeling or new construction
- Available for full mortise application on square edge doors only
- Designed to replace existing 3 1/2" (89mm) or 4" (102mm) hinges for Swing Clear openings (some modification of preparation may be required for residential use)
- Designed to swing doors completely clear of the opening when door is opened 95°



Class Number	Size Length of Joint		Gauge of Metal		Flat Head Screws/ Per Piece	Quantity Per Box	Quantity Per Case	Case Weight	
	Inches	(mm)	Inches	(mm)				Lbs.	(Kg)
F248	3 1/2	(89)	.123	(3.1)	6-10 x 1	2 ea.	20 ea.	16	(7)
	4	(102)	.130	(3.3)	8-12 x 1 1/4	2 ea.	20 ea.	24	(11)

Standard Weight Concealed Bearing "Swing Clear" Full Mortise

Steel – polished and plated or phosphated and prime coated for painting

CB248 – (ANSI A8122)

CB258 – (ANSI A8122)

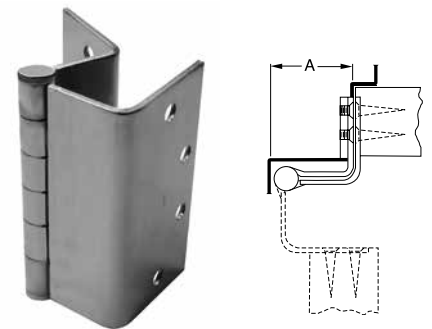
Stainless steel – highly polished or satin finish

STSCB248 – (ANSI A5122)

STSCB258 – (ANSI A5122)



- Reversible flush tips and pins
- Ideal for remodeling or new construction
- Specify CB248 and STSCB248 for full mortise application on square edge doors
- Specify CB258 and STSCB258 for full mortise application on bevel edge doors
- Designed to swing doors completely clear of the opening when door is opened 90°
- Concealed bearing is maintenance-free – no oil, no grease
- Hinges can be furnished with hospital tips (HT)
- Limited lifetime warranty



CB248 (Shown) and STSCB248
{For square edge doors}

CB258 and STSCB258
{For doors beveled 1/8" in 2" (3.2 in 51mm)}

Class Number	Size Length of Joint		Minimum Clearance Required Dimensions "A"		Gauge of Metal		Flat Head Screws/ Per Piece		Quantity Per Box	Quantity Per Case	Case Weight	
	Inches	(mm)	Inches	(mm)	Inches	(mm)	Frame Leaf Machine	Door Leaf Wood			Lbs.	(Kg)
CB248, STSCB248	4 1/2	(114)	2 1/8	(54)	.134	(3.4)	4-12-24 x 1/2	4-12 x 1 1/4	3 ea.	24 ea.	36	(17)
CB258, STSCB258	4 1/2	(114)	2 1/8	(54)	.134	(3.4)	4-12-24 x 1/2	4-12 x 1 1/4	3 ea.	24 ea.	36	(17)

5 Knuckle Swing Clear Hinges

Heavy Weight Concealed Bearings "Swing Clear"

Steel – polished and plated or phosphated and prime coated for painting

CB268 – (ANSI A8121)

CB278† – (ANSI A8121)

CB269 – (ANSI A8421)

CB264 – (ANSI A8221)

CB274† – (ANSI A8221)

CB266 – (ANSI A8321)

Stainless steel – highly polished or satin finish

STSCB268 – (ANSI A5121)

STSCB278† – (ANSI A5121)

STSCB269 – (ANSI A5421)

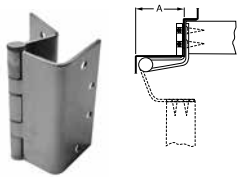
STSCB264 – (ANSI A5221)

STSCB274† – (ANSI A5221)

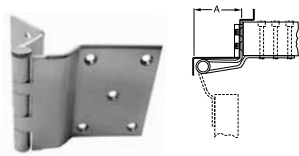
STSCB266 – (ANSI A5321)



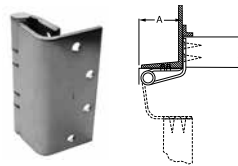
- For corridor doors to patient's rooms, operating rooms, emergency rooms or wherever conditions require a completely clear opening
- Designed to swing door in hospitals, institutions or public buildings completely clear of the opening when door is opened 95°
- Consult factory for hinges available to clear 90°
- Concealed bearing is maintenance free – no oil, no grease
- Pins in nonferrous hinges are stainless steel
- Hinges can be furnished with hospital tips (HT)
- Full surface and half surface hinges packed with flat head machine screws and grommet nuts for door leaf, specify door thickness if other than 1 3/4"
- Consider using a back plate with full surface and half surface hinges
- For half mortise and full surface hinges to fit narrow metal frames, consult factory
- Limited lifetime warranty
- Reversible flush tips and pins



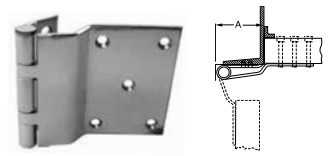
Full Mortise
CB268 and STSCB268
{For square edge doors} (shown)



Half Surface
CB269 and STSCB269



Half Mortise
For channel iron frames
CB264 and STSCB264
{For square edge doors} (shown)



Full Surface
For channel iron frames
CB266 and STSCB266

CB278† and STSCB278†
{For doors beveled 1/8" in 2"
(3.2 in 51mm)}

CB274† and STSCB274†
{For doors beveled 1/8" in 2"
(3.2 in 51mm)}

Class Number	Size Length of Joint		Minimum Clearance Required Dimensions "A"		Gauge of Metal		Flat Head Screws/ Per Piece		Quantity Per Box	Quantity Per Case	Case Weight	
	Inches	(mm)	Inches	(mm)	Inches	(mm)	Frame Leaf Machine	Door Leaf Wood			Lbs.	(Kg)
CB268, STSCB268	4 1/2	(114)	2 1/8	(54)	.180	(4.6)	4-12-24 x 1/2	4-12 x 1 1/4 W.S	3 ea.	15 ea.	31	(14)
CB268, STSCB268	5	(127)	2 1/8	(54)	.190	(4.8)	4-12-24 x 1/2	4-12 x 1 1/4 W.S	3 ea.	15 ea.	35	(16)
CB278†, STSCB278†	4 1/2	(114)	2 1/8	(54)	.190	(4.8)	4-12-24 x 1/2	4-12 x 1 1/4 W.S	3 ea.	15 ea.	31	(14)
CB278†, STSCB278†	5	(127)	2 1/8	(54)	.190	(4.8)	4-12-24 x 1/2	4-12 x 1 1/4 W.S	3 ea.	15 ea.	35	(16)
CB269, STSCB269	5	(127)	2 1/8	(54)	.190	(4.8)	4-12-24 x 1/2	5-1/4-20 x 1 1/4 M.S.*		3 ea.	9	(4)
CB264, STSCB264	5	(127)	2 1/8	(54)	.190	(4.8)	4-12-24 x 1/2	4-12 x 1 1/4 W.S	3 ea.	15 ea.	35	(16)
CB274† STSCB274	5	(127)	2 1/8	(54)	.190	(4.8)	4-12-24 x 1/2	4-12 x 1 1/4 W.S	3 ea.	15 ea.	35	(16)
CB266, STSCB266	5	(127)	2 1/8	(54)	.190	(4.8)	4-12-24 x 1/2	5-1/4-20 x 1 1/4 M.S.*	3 ea.	15 ea.	35	(16)

* Furnished with through-bolts and grommet nuts.

† For doors beveled 1/8" IN 2" (3.2MM IN 51 MM) on hinge side. For frame and door leaf dimensions refer to template furnished on request. If door closers, friction or overhead door holders are to be used in conjunction with these hinges, consult manufacturer of the device to be used for application details

5 Knuckle Hinges

Full Mortise Standard Weight Plain Bearing

F179 – (ANSI A8133 except for 3" x 3") Steel – polished and plated or phosphated and prime coated for painting

F191 – (ANSI A2133) Brass or bronze – polished and plated or painted

F191 (32) – (ANSI A5133) Stainless steel – highly polished

F191 (32D) – (ANSI A5133) Stainless steel – satin finish



- For use on internal or external doors without door closers in hospitals, churches, schools, airports, hotels, malls, apartment houses, office buildings, etc.
- All hinges have template screw hole location for use on either wood or hollow metal doors and frames
- Use anti-friction bearing hinges on high and average frequency doors and all doors equipped with door closers
- Hinges can be furnished with hospital tips (HT)



Size Open		Gauge of Metal		Flat Head Screws Per Piece		Quantity Per Box	Quantity Per Case	Case Weight			
Inches	(mm)	Inches	(mm)	Machine	Wood			Bronze		Steel	
								Lbs.	(Kg)	Lbs.	(Kg)
3 x 3*	(76 x 76)	.080	(2)		6 - 9 x 3/4	2 ea.	100 ea.	32	(15)		
3 1/2 x 3	(89 x 76)	.123	(3.1)	6 - 10-24 x 1/2	6 - 10 x 1	2 ea.	100 ea.	60	(27)	64	(29)
3 1/2 x 3 1/2	(89 x 89)	.123	(3.1)	6 - 10-24 x 1/2	6 - 10 x 1	2 ea.	100 ea.	66	(30)	72	(33)
4 x 3 1/2	(102 x 89)	.130	(3.3)	8 - 12-24 x 1/2	8 - 12 x 1 1/4	3 ea.	48 ea.	38	(17)	44	(20)
4 x 4	(102 x 102)	.130	(3.3)	8 - 12-24 x 1/2	8 - 12 x 1 1/4	3 ea.	48 ea.	43	(20)	46	(21)
4 1/2 x 4	(114 x 102)	.134	(3.4)	8 - 12-24 x 1/2	8 - 12 x 1 1/4	3 ea.	48 ea.	51	(23)	54	(25)
4 1/2 x 4 1/2	(114 x 114)	.134	(3.4)	8 - 12-24 x 1/2	8 - 12 x 1 1/4	3 ea.	48 ea.	55	(25)	60	(27)
*5 x 4	(127 x 102)	.146	(3.7)	8 - 12-24 x 1/2	8 - 12 x 1 1/4	3 ea.	30 ea.	40	(18)	43	(20)
*5 x 4 1/2	(127 x 127)	.146	(3.7)	8 - 12-24 x 1/2	8 - 12 x 1 1/4	3 ea.	30 ea.	43	(20)	46	(21)
*5 x 5	(127 x 127)	.146	(3.7)	8 - 12-24 x 1/2	8 - 12 x 1 1/4	3 ea.	30 ea.	46	(21)	51	(23)

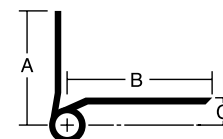
*Steel only – for other substrates consult factory

Half Surface Standard Weight Plain Bearing

F173 – (ANSI A8433) Steel – polished and plated or phosphated and prime coated for painting



- For low frequency kalamein or wood doors
- Use ball bearing hinges on all doors equipped with door closers
- Easily applied as only jamb leaf is mortised
- Packed with machine screws and grommet nuts



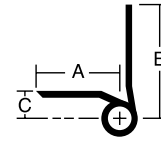
Measurements below



Size Length of Joint		Width		Offset		Gauge of Metal		Flat Head Screws Per Piece		Quantity Per Box	Quantity Per Case	Case Weight			
		Frame Leaf (A)	Door Leaf (B)	(C)				Frame Leaf	Door Leaf						
Inches	(mm)	Inches	(mm)	Inches	(mm)	Inches	(mm)					Lbs.	(Kg)		
4 1/2	(114)	2 1/16	(52.4)	2 9/16	(65.1)	9/16	(14.3)	.134	(3.4)	4-12-24 x 1/2	3-1/4-20 x 2	3 ea.	30 ea.	37	(17)

Half Mortise Standard Weight Plain Bearing

F167 – (ANSI A8233) Steel – polished and plated or phosphated and prime coated for painting



Measurements below



- For low frequency hollow metal or wood doors with channel iron frames
- Use ball bearing hinges on all doors equipped with door closers
- Easily applied as only door leaf is mortised

Size Length of Joint		Width				Offset		Gauge of Metal		Quantity & Size of Screws/ Per Piece		Quantity Per Box	Quantity Per Case	Case Weight	
		Frame Leaf (A)		Door Leaf (B)		(C)				Frame Leaf	Door Leaf				
Inches	(mm)	Inches	(mm)	Inches	(mm)	Inches	(mm)	Inches	(mm)					Lbs.	(Kg)
4 1/2	(114)	1 1/2	(38.1)	2 1/16	(52.4)	7/16	(11.1)	.134	(3.4)	4-12-24 x 1/2	3-12-24 x 1/2	3 ea.	30 ea.	28	(13)

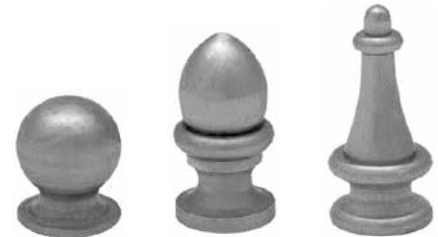
Conversion Tips and Pins

- Converts standard hinges to decorative tips
- Available in three styles, Ball, Crown and Steeple
- Same tips fit "CB", "1900R" and "F" line hinges
- Conversion pins are stainless
- Conversion pins accept NRP screw
- Knurl eliminates pin rotation
- For heavy weight consult factory



Pin

Standard Weight Tips and Pins



Ball

Crown

Steeple

STANLEY®

6161 East 75th Street
Indianapolis, IN 46250 USA

Phone 855-365-2407

stanleyhardwarefordoors.com

SAH008 Rev10/6/2018
© 2018 dormakaba USA Inc. All rights reserved.

© 2018 Stanley Black & Decker, Inc. STANLEY® and the STANLEY® Notched Rectangle logo are registered trademarks of Stanley Black & Decker Inc. or one of its affiliates, and are used under license

dormakaba

dormakaba.com