

### QDC200 DOOR CLOSER



QDC211  
Tri-Pack Arm



QDC212  
Tri-Pack Arm  
with Hold-Open



QDC213  
Heavy Duty Arm  
with Compression Stop



QDC214  
Heavy Duty Arm  
with Hold-Open  
and Compression Stop

### QDC300 DOOR CLOSER



QDC311  
Tri-Pack Arm



QDC312  
Tri-Pack Arm  
with Hold-Open



QDC313  
Heavy Duty Arm  
with Compression Stop



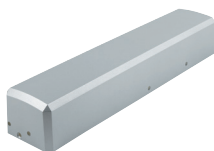
QDC314  
Heavy Duty Arm  
with Hold-Open  
and Compression Stop

### QDC200 & QDC300 FEATURES

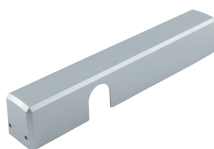
- BHMA/ANSI GRADE 1 CERTIFIED
- LIFETIME MECHANICAL WARRANTY
- NON-HANDED
- CONSISTENT STYLING WITH PORTFOLIO



### QDC200 COVERS



Full-Size Plastic (F)



Slim-Line Plastic (S)

### QDC300 COVERS



Full-Size Plastic (F)

**Q: What is the STANLEY Commercial Hardware QDC200 & QDC300?**

A: The QDC200 & QDC300 are grade 1 door closers. They have been tested to significantly exceed the performance requirements for grade 1 certification.

**Q: Who is the QDC200 & QDC300 customer?**

A: The QDC200 is a cost-effective option ideal for institutional and aluminum storefront applications. In addition, it has the same bolt pattern as the Norton 8000 Series, so it is commonly used as a replacement closer in applications where the Norton 8000 Series has been specified. The QDC300 is a cost-effective option ideal for aluminum storefront applications due to its smaller closer body. In addition, it has the same bolt pattern as the Norton 1600 Series, so it is commonly used as a replacement closer in applications where the Norton 1600 Series has been specified.

**Q: What arm options are offered on the QDC200 & QDC300?**

A: The QDC200 & QDC300 are both available in 4 unique arm options that feature variant arm and stop types. There are two arm types: a tri-pack arm and heavy duty arm. The tri-pack arm can be mounted in three different ways: top jamb, standard arm, and standard parallel arm. This provides the distributor and end user with versatility on how the closer can be used. There is one stop type: compression. The compression stop includes an engineered polymer that eliminates metal to metal contact that allows the energy to dissipate. In addition, the QDC200 & QDC300 can be ordered with hold-open capabilities.

**Q: What is the spring power capability on the QDC200 & QDC300?**

A: The QDC200 & QDC300 are fully adjustable from 1-6 allowing for maximum flexibility.

**Q: What covers are available to order for the QDC200 & QDC300?**

A: The QDC200 is available to order with two different covers: full size plastic (F) & slim line plastic (S). The QDC300 is available to order with one cover: full size plastic (F).

**Q: What options are available to order on the QDC200 & QDC300?**

A: The QDC200 is available to order with a drop plate option. The QDC300 is available to order with a drop plate and barrier free option. The drop plate allows you to mount the closer in different configurations when dealing with reduced rail heights. The barrier free option enables the device to meet ADA requirements by requiring less than 5 pounds of force to enter. The QDC200 comes standard to pass barrier free requirements, so you don't have to specify it when ordering. In addition, the QDC200 & QDC300 both come standard with the delayed action feature.

**Q: Do you have to specify handing when ordering a QDC200 & QDC300?**

A: The QDC200 & QDC300 devices and covers are non-handed, so you can simply flip it around to fit the specific application.

**Q: What finishes are offered for the QDC200 & QDC300?**

A: The QDC200 & QDC300 are available in 3 finishes: 689, 690 and 696.

**Q: What is the lead time for a QDC200 & QDC300?**

A: The average lead time for a QDC200 & QDC300 is less than 2 weeks.

**Q: What warranty does the QDC100 have?**

A: The QDC200 & QDC300 have a limited lifetime mechanical warranty and a 3 year finish warranty.

**Q: What is the QDC200 & QDC300 list price?**

A: The list price for the QDC200 ranges from \$222 – \$340. The list price for the QDC300 ranges from \$180 – \$294.