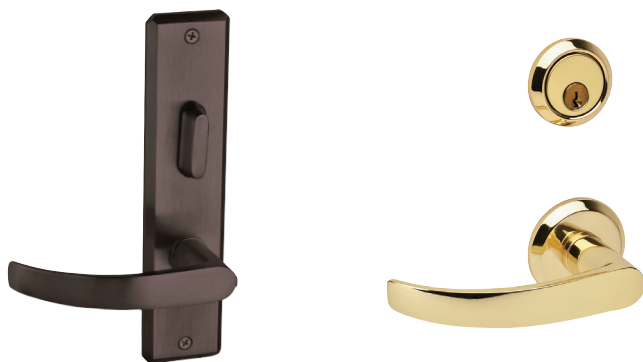


QMS/QME100 Mortise Locks



More standard security features, better value.

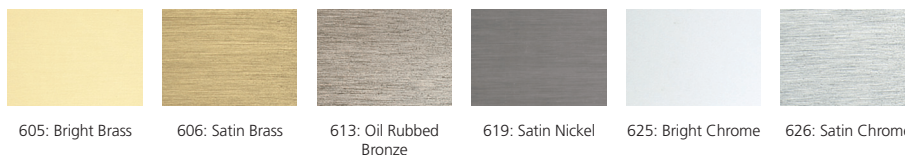
STANLEY Commercial Hardware QMS/QME100 series heavy-duty mortise locks offer more standard security features at a better value than many other options for high-security applications. Designed to provide more reliability, higher security, and enhanced vandal resistance, QMS/QME100 series locks deliver value throughout the life of the lock.



Built-in features for premium performance.

We designed the QMS/QME100 series with heavy-duty torsion springs to prevent lever sag, break away spindles to enhance security and simplify maintenance, thru bolt design for secure installation, and a clutching mechanism for vandal resistance. These are just a few of the features that make the QMS/QME100 a high value, premium solution for high security applications.

QMS/QME100: Heavy Duty Mortise Locks Specifications	
Certifications	ANSI/BHMA A156.13 Series—Grade 1 ANSI A117.1 Accessibility Code (ADA compliant) UL/cUL listed (3 hour) for "A" label single door applications (4' by 8') UL10C/UBC 7-2 (1997) positive pressure rated UL10B pressure rated California State Reference Code (formerly Title 19 – Fire Marshal)
Product Specifications	Template: 3 5/8" (92mm) Trim: solid forged brass Spindles: dual 8mm Deadbolt: 1" (25.4mm) stainless steel Floating mounting tabs: adjust to door bevel Toggle button locking Faceplate: heavy gauge steel armor Door thickness: sectional 1 3/4" (44.5mm) – 2" (51mm) standard, 57mm optional; escutcheon 1 3/4" (44.5mm) – 2 1/4" (57mm) standard
Keying	6-pin non-IC brass cylinders 6- or 7-pin SFIC option available Two keys per lockset Keying options include: master keying, grand master keying, construction keying Keyway options include: BF-SFIC "F", KW-Kwikset, WE-Weiser, SC-Schlage, GA-Yale, LA-Sargent, LC-Less Cylinder
Functions	QMS/QME120 Single Dummy QMS/QME122 Full Dummy ANSI F01 QMS/QME130 Passage ANSI F22 QMS/QME140 Privacy ANSI F19 QMS/QME145 Privacy with Deadbolt ANSI F04 QMS/QME150 Entry ANSI F13 QMS/QME152 Exit ANSI F20 QMS/QME154 Corridor ANSI F11 QMS/QME158 Dormitory ANSI F05 QMS/QME160 Classroom ANSI F32 QMS/QME162 Classroom Security ANSI F09 QMS/QME164 Apartment ANSI F07 QMS/QME170 Storeroom ANSI F30 QMS/QME172 Institutional ANSI F14 QMS/QME174 Store Door
Finishes	605: Bright Brass 619: Satin Nickel 606: Satin Brass 625: Bright Chrome 613: Oil Rubbed Bronze 626: Satin Chrome
Warranties	Lifetime mechanical Three-year finish (613 carries no finish warranty)



605: Bright Brass 606: Satin Brass 613: Oil Rubbed Bronze 619: Satin Nickel 625: Bright Chrome 626: Satin Chrome

Features

STANLEY Commercial Hardware QMS/QME100

- **Durable and secure.** With ANSI/BHMA Grade 1 certification, solid forged brass trims, and heavy gauge steel armor faceplate, the QMS/QME100 series is designed for maximum durability and security.
- **Leading warranties.** With a lifetime mechanical and three-year finish warranty, the QMS/QME100 series is backed by industry-leading guarantees.
- **Easy to retrofit.** Sectional trim, escutcheon trim, and deadbolt options are available on all QMS/QME100 series locks.
- **Simplified installation.** A non-handed, field reversible mortise case, floating mounting tabs to adjust to door bevel, thru bolt design, pre-assembled trims with spring-loaded spindles that automatically adjust to door thickness, and compartmentalized packaging makes QMS/QME100 series locks easier and faster to install.
- **Short lead time.** Our QMS/QME100 series interconnected locks are available for immediate shipment.

For quality, durability, and performance in high security applications, choose the heavy-duty mortise lock backed by the name more Americans trust with their security.