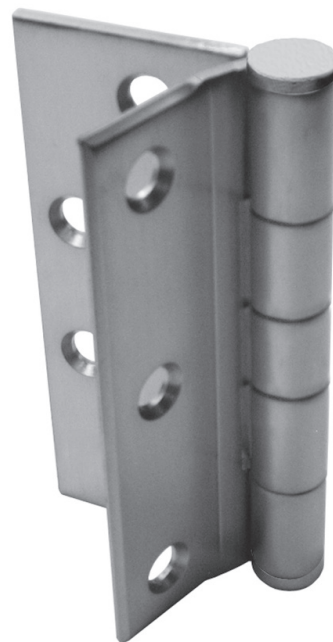
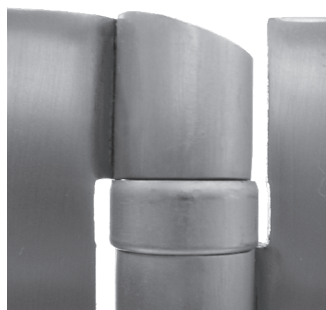


### F SERIES HINGES



### F SERIES HINGE TIP OPTIONS



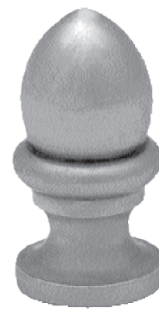
Hospital Tip



Steeple Tip



Ball Tip



Crown Tip

### **Q: What are STANLEY F Series hinges?**

A: F Series hinges are plain bearing hinges that are used on internal or external doors without door closers.

### **Q: What hinge types are the F Series offered in?**

A: F Series hinges are available in full mortise, half mortise and half surface. F Series hinges are only available in standard weight.

### **Q: What knuckle designs are F Series hinges offered in?**

A: F Series hinges are only available in a 5 knuckle design.

### **Q: What is the common F Series hinge application?**

A: The F Series consists of standard commercial grade door hinges. This makes them an ideal fit for wood and metal doors, light to medium weight doors and low to medium frequency usage applications. In addition, ferrous and non-ferrous hinges are available. Ferrous hinges are a good fit for interior applications whereas non-ferrous hinges are ideal for exterior or corrosive environments. F Series hinges are not approved for use on fire-rated doors.

### **Q: What hinge tips are offered for the F Series?**

A: F Series hinges can be ordered with decorative tips (i.e., ball, crown, steeple) or specialty tips (i.e., hospital).

### **Q: What hinge options are available for the F Series?**

A: Many made-to-order hinge options are available including: NRP (Non-Removable Pins), security stud, special swage, raised barrel, radius corner, wide throw, slip-in applications and rust-resistant base.

### **Q: Are there electrical options available to order on F Series hinges?**

A: There are no electrical options offered on F Series hinges.

### **Q: How many hinges are required per door installation?**

A: Two hinges are required on doors up to 5' and an additional hinge is required for each additional 2.5'.

### **Q: What screws are included with F Series hinge orders?**

A: Both machine and wood screws are included in full mortise and half mortise F Series hinge orders to allow for easy installation on either wood or metal doors and door frames. Half surface F Series hinges are packed with machine screws and grommet nuts.

### **Q: Do you have to specify handing when ordering F Series hinges?**

A: F Series hinges are non-handed, so they can be used on both RH and LH doors.

### **Q: What finishes are offered for F Series hinges?**

A: F Series hinges are available in 30+ finishes allowing for cohesion with other door hardware finishes.

### **Q: What is the lead time for F Series hinges?**

A: The average lead time for stock F Series hinges is 48 hours from order receipt. The average lead time for made-to-order hinges of quantities up to 200 units is approximately 3 weeks. Please consult the factory for made-to-order requests in quantities larger than 200 units for respective lead times.

### **Q: What warranty do F Series hinges have?**

A: F Series hinges have a limited lifetime mechanical warranty for the life of the building.