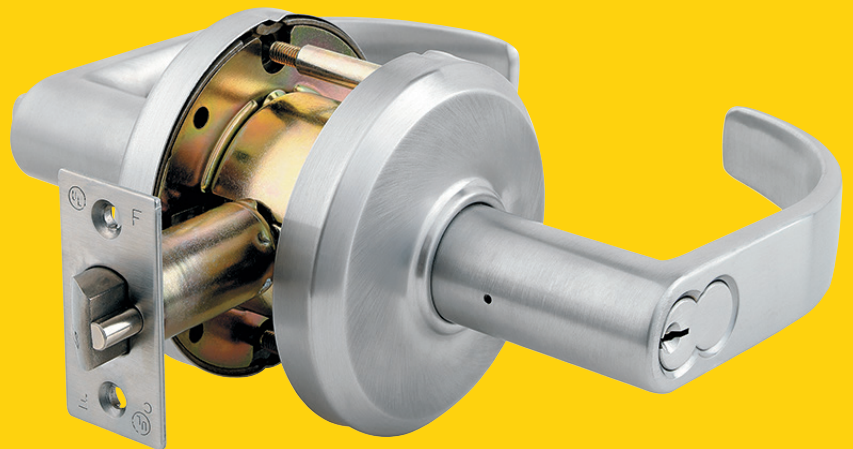
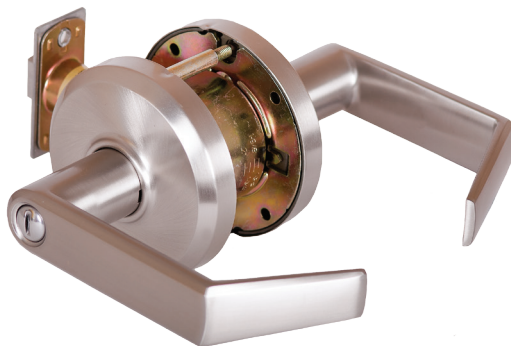


QCL200 Cylindrical Locks



A better solution for standard-duty applications.

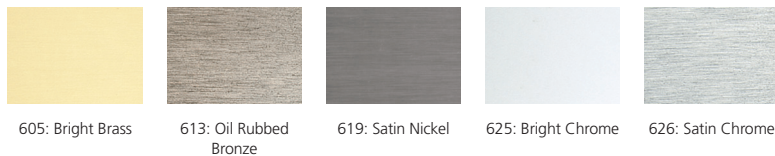
STANLEY Commercial Hardware's QCL200 standard-duty cylindrical lock series provides a better solution for light commercial applications. Designed for quick installation, easy retrofit, longer performance life, and vandal resistance, the QCL200 series offers a better initial value and significant long-term savings. Our QCL200 series cylindrical locks combine quality, performance, and value—and are backed by the name more Americans trust with their security.



Simple to customize, install, and retrofit.

We designed the QCL200 series to simplify standard-duty solutions. With a range of configuration options, a compatible door prep and bolt pattern, and simplified packaging, a QCL200 series lock makes your job easier.

QCL200 Standard Duty Cylindrical Lock Specifications	
Certifications	ANSI/BHMA A156.2 Series—Grade 2 ANSI A117.1 Accessibility Code (ADA compliant) UL/cUL listed (3 hour) for “A” label single door applications (4’ by 8’) UL10C/JBC 7-2 (1997) positive pressure rated UL10B pressure rated California State Reference Code (formerly Title 19 – Fire Marshal) Hurricane Compliant – Miami DADA N.O.A.
Product Specifications	Exposed trim: pressure cast zinc, plated to match finish designation Standard door thickness: 1 3/8” (35mm) – 2” (51mm) Backset: 2 3/4” (70mm) square standard; 2 3/8” (60mm) and 5” (127mm) available Strike: ANSI strike 1 1/4” (32mm) x 4 7/8” (124mm) standard; other options available Door prep: 2 1/8” (54mm) diameter cross bore Latch bolt: keyed/exterior 1/2” (12.7mm) steel throw; interior 1/2” (12.7mm) spring latch; 3/4” throw option for hurricane compliance or fire-rated double door applications Latch faceplate: 1 1/8” (29mm) x 2 1/4” (57mm) standard
Keying	6-pin non-IC brass cylinders 6- or 7-pin SFIC option available Two keys per lockset Keying options include: master keying, grand master keying, construction keying Keyway options include: BF-SFIC “F”, KW-Kwikset, WE-Weiser, SC-Schlage, GA-Yale, LA-Sargent, LC-Less Cylinder
Functions	QCL220 Single Dummy ANSI F75 QCL230 Passage ANSI F111 QCL235 Communicating ANSI F76 QCL240 Privacy ANSI F109 QCL250 Entry/Office ANSI F109 QCL251 Entry/Office SFIC ANSI F90 QCL254 Corridor ANSI F90 QCL255 Corridor SFIC ANSI F84 QCL260 Classroom ANSI F84 QCL261 Classroom SFIC ANSI F86 QCL270 Storeroom ANSI F86 QCL271 Storeroom SFIC
Finishes	605: Bright Brass 613: Oil Rubbed Bronze 619: Satin Nickel 625: Bright Chrome 626: Satin Chrome
Warranties	Lifetime mechanical Three-year finish (613 carries no finish warranty)



605: Bright Brass 613: Oil Rubbed Bronze 619: Satin Nickel 625: Bright Chrome 626: Satin Chrome

Features

STANLEY Commercial Hardware QCL200

- **Designed for security.** With features like thru bolt design, clutching mechanisms, and fire-rated latches—plus available hurricane compliant option—QCL200 series locks ensure the utmost security.
- **Backed by a leading warranty.** The QCL200 lock series comes with lifetime mechanical and three-year finish warranties.
- **Durable safety.** We designed the QCL200 series with heavy-duty torsion springs to prevent lever sag and ensure long-term durability. Each lock in the series is BHMA/ANSI Grade 2 certified.
- **Easy to retrofit.** Choose locks with a SFIC option or keep your existing small format cores and use them with QCL200 series locks. Standard door prep and the same thru bolt pattern found in other common locks makes retrofit quick and easy.
- **Simple to install.** Compartmentalized packaging makes QCL200 locks easier to install.
- **Reliable value.** The QCL200 series combines premium materials, construction, and performance at a great value—both in your up-front investment and in long-range durability.
- **Short lead time.** QCL200 series locks are available for immediate shipment.

For standard-duty, light commercial applications, choose the lock that combines quality, performance, and value. STANLEY Commercial Hardware QCL200 series cylindrical locks deliver the results you expect from the name America trusts.